



# CASCADE FIRE EQUIPMENT

**VELOCITY**  
FIRE EQUIPMENT SALES



## SLIP-ON FIREFIGHTING UNITS

# SLIP-ON FIREFIGHTING UNITS

Cascade Fire Equipment builds custom Slip-Ons in a class of their own, delivering units that are dependable, versatile and durable. From conception to completion, each unit is built on-site to customer's specifications and design requirements.

We manufacture our own tanks, pumps, control panels, boxes, valves, fuel tanks, stainless steel plumbing and aluminum frames, which gives us the flexibility to tailor our Slip-On Units to fit any truck – from standard pickup beds with utility boxes to flatbeds with customized boxes built around the Unit.

Upon completion, each Slip-On Firefighting Unit is thoroughly inspected and tested to make sure the unit you receive delivers the highest performance possible for today's demanding firefighting.

With a Cascade Fire Equipment Slip-On, your pickup or flat-bed vehicle becomes a fast initial-attack firefighting unit. Because of their flexibility, capacity and convenience, these highly mobile units can easily mean the difference between a quick knockdown and a major fire.

Cascade's Slip-On Units are used by forestry departments, city fire departments, and private contractors, and are in use in most states and several foreign countries.

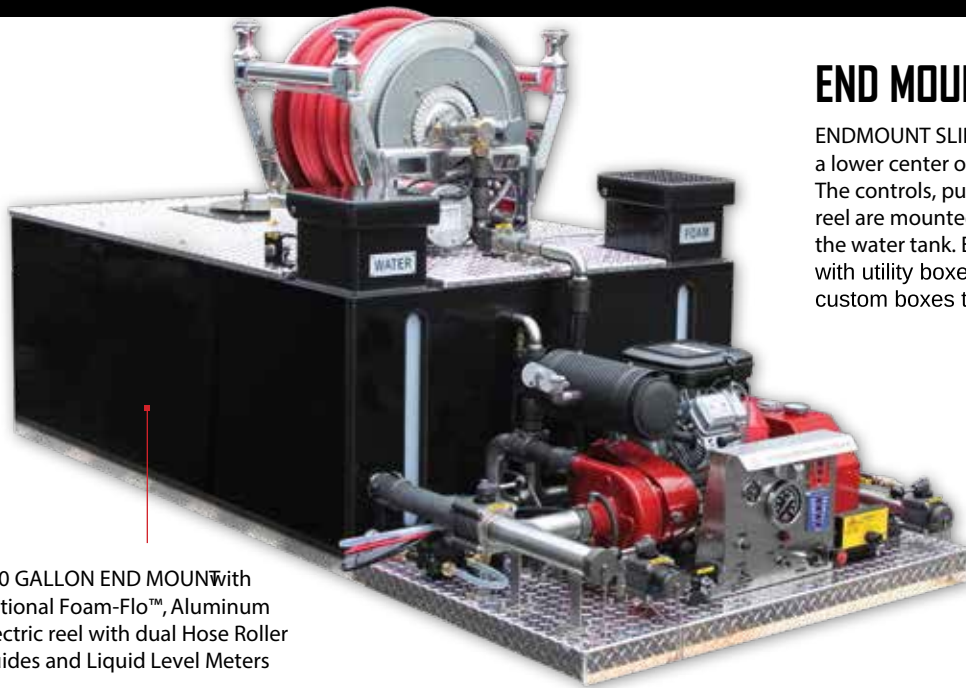
Please call us for a quote today. We will be happy to custom-design and build a Slip-On Firefighting Unit to meet your unique requirements.



[www.VTCFire.com](http://www.VTCFire.com)







300 GALLON END MOUNT with optional Foam-Flo™, Aluminum Electric reel with dual Hose Roller Guides and Liquid Level Meters

## END MOUNTS

ENDMOUNT SLIP-ON UNITS generally have a lower center of gravity than Top-Mount Units. The controls, pump, plumbing and sometimes reel are mounted on a platform at the rear of the water tank. End-Mounts are great for trucks with utility boxes or flatbeds. We can also build custom boxes to fit your Slip-On package.



150 GALLON TOP MOUNT with optional Foam-Flo™ and Hose Roller Guide.

## TOP MOUNTS

TOP MOUNT SLIP-ONS incorporate all components on the top of the tank, taking up less space in the bed and leaving room for other cargo. Top-Mounts are ideal for standard pickup beds and low-profile utility boxes with the option of extending components to the edge of the boxes. The Control Panel can either be on the driver's side or at the rear.



75 GALLON ATV UNIT with optional Mini-Control Panel and Steel Electric Hose Reel with Hose Roller Guide.

## LIGHT & ATV

Cascade's compact Slip-On Firefighting Units are just what your department needs to convert your lightweight patrol vehicles or ATV units into fast-attack firefighting and rescue tools for roadless, wilderness, and recreation areas. The condensed top-mount design leaves plenty of payload space, and every unit is designed according to your specifications.

# SLIP-ON STANDARD EQUIPMENT

## TOP MOUNTS END MOUNTS

**STANDARD SLIP-ON EQUIPMENT** on every full-size Slip-On firefighting unit includes a polypropylene tank, 18 HP centrifugal pump, electric rewind hose reel, stainless steel control panel, full flow all stainless steel plumbing, diamond plate surface, and additional standards listed at right .

### ADDITIONAL STANDARD SLIP-ON EQUIPMENT

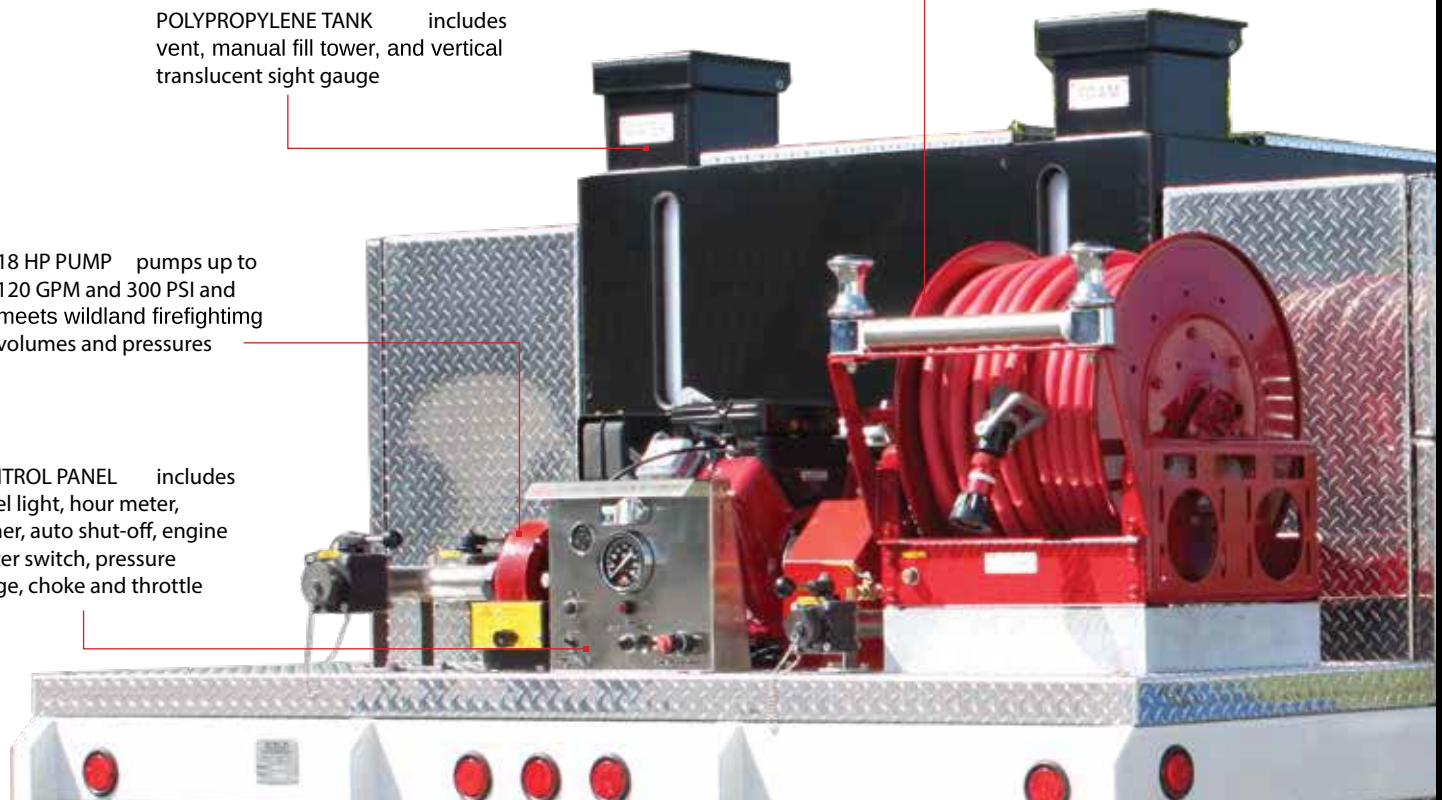
- ③ 2" square aluminum tubular frame fully supports tank and platform
- ③ Surface covered with .125 aluminum diamond plate. All edges are turned, welded and finished
- ③ Fire service grade slip-out style valves bolted to stainless steel flange
- ③ Recirculation line for the pump, with a ball valve to reduce the danger of overheating
- ③ Overboard suction port and auxiliary valved discharge with chrome cap and chain
- ③ Valved tank-to-pump suction line and valved tank refill (pump-to-tank)
- ③ Removable foot valves and anti-cavitation suction strainer in tank (on Top Mounts)
- ③ Full-Flo stainless steel plumbing: 304 seamless stainless steel-welded, sanded and shot-blasted to a smooth finish
- ③ High pressure hose with reusable expansion ring couplings, providing vibration control to tank, reel and stainless steel plumbing
- ③ Components secured to tank and platform with stainless steel bolts
- ③ Non-slit corrugated loom covering all water and foam auxiliary lines
- ③ Winterization system, complete installation kit and instruction manual
- ③ Camozzi fittings and all stainless steel fasteners and brackets
- ③ ¾" polypropylene pumper board
- ③ Electric primer
- ③ Distinct labels on all valves

**POLYPROPYLENE TANK** includes vent, manual fill tower, and vertical translucent sight gauge

**18 HP PUMP** pumps up to 120 GPM and 300 PSI and meets wildland firefighting volumes and pressures

**CONTROL PANEL** includes panel light, hour meter, primer, auto shut-off, engine starter switch, pressure gauge, choke and throttle

**HANNAY HOSE REEL** is a painted steel booster reel with electric rewind. Comes with 200' of hose and fog/straight stream shut-off nozzle

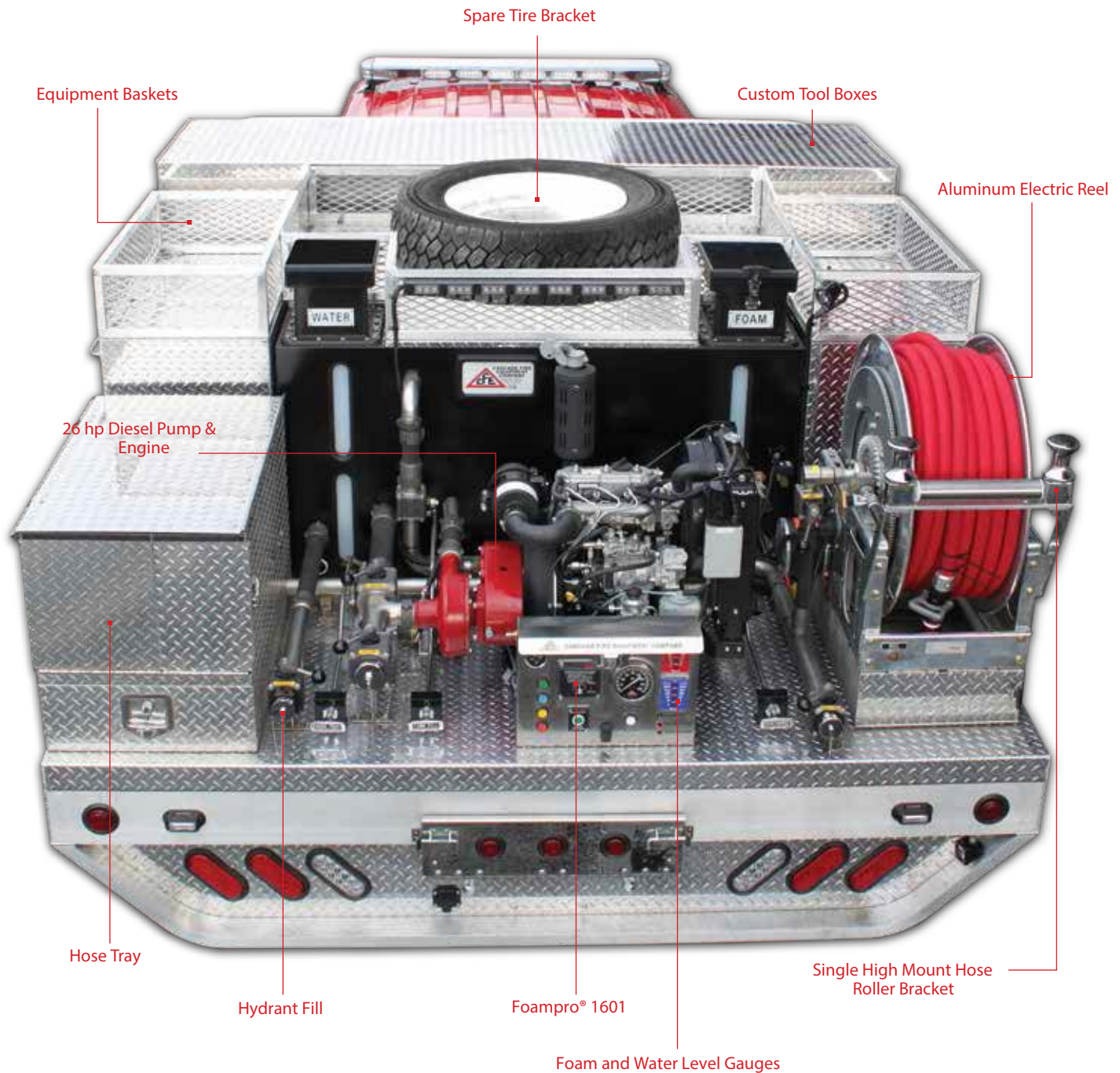




## OPTIONAL EQUIPMENT

SLIP-ON  
OPTIONAL EQUIPMENTTOP MOUNTS  
END MOUNTS

Some of the most popular options are shown here. Many more options exist for your complete customization. On some of the smaller units space may not allow for installation of all options. Options shown are priced installed on the Slip-On at time of purchase.



400 gallon End Mount Slip-on built for WILLOW CREEK FIRE DEPARTMENT , California



## 23 HP PUMP & ENGINE

CF-130 Centrifugal pump powered by a 23 hp Briggs & Stratton Engine



## 26 HP PUMP & ENGINE

Diesel fueled high pressure centrifugal pump powered by a Kubota Engine



## HOSE REEL OPTIONS

Options for Aluminum reels, motor hp, and chrome hose roller guides installed in one or both sides in high or low configuration.



## FOAM PROPORTIONING

FOAM-FLO™ with Foam Cell proportions Class A Foam with selector valve controlling percentage.

FOAMPRO® 1601 provides fully automatic foam proportioning delivering total accuracy over entire range of flow.



## LIQUID LEVEL GAUGES

IntelliTank Foam and Water Gauges and MC Liquid Level Gauge give liquid levels at a glance.



## LIVE HOSE TRAY

Constructed from heavy aluminum diamond plate, with a rotary joint and full-flow ball valve. Accommodates 200 ft. of 1.5" hose

## HYDRANT FILL

1.5" or 2.5" fire service drop-out valve provides quick refill from a hydrant or water tender

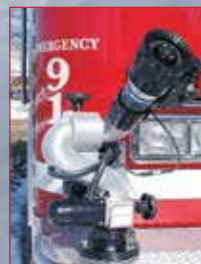


## CASCADE'S MONITOR

Ideal for discharging water or Class A foam in wildland firefighting where discharges of 350 GPM or less is required.

## REMOTE ELECTRIC MONITOR

Your choice of an Akron, TFT, or Elkhart Monitor



TFT Tornado



Akron Forestry



Elkhart Sidewinder



# END MOUNTS & TOP MOUNTS



## BROWNSVILLE FIRE DEPARTMENT

End Mount with Aluminum Electric Hose Reel with single Hose Roller Guide, Foam-Flo™, Hydrant Fill, Hose Tray, Water Level Gauge, Equipment Baskets and Boxes.



## ALBANY FIRE DEPARTMENT

End Mount with dual Aluminum Electric Hose Reels with Hose Roller Guides, 26HP Pump & Engine, Foam-Flo™, Hydrant Fill, Hose Tray, Liquid Level Gauges, Equipment Boxes.



Buckstop Bumper with extra Discharge



## OREGON DEPARTMENT OF FORESTRY

End Mount with Aluminum Electric Hose Reel with Hose Roller Guide, Foam-Flo™, Hydrant Fill, Liquid Level Gauge, Equipment Boxes, Spare Tire Bracket.

## SLIP-ON CAPACITIES & WEIGHTS

Additional sizes & options available.  
Please contact us for a custom quote.

END MOUNT	TOP MOUNT	CAPACITY	EMPTY WEIGHT	FULL WEIGHT
24120	24156	125 gal	700	1700
24121	24157	150 gal	725	1970
24123	24158	200 gal	775	2435
24124	24159	250 gal	825	2900
24125	24160	300 gal	875	3365
24127	24163	400 gal	1025	4345

## OPTIONAL EQUIPMENT

PART	DESCRIPTION
11564P	Suction Hose 10' x 2" (Used on 18 hp Pump)
11685P	Aluminum Reel
11914P	Foam-Pro 1601 with Foam Cell
11923P	Foam-Flo™ with Foam Cell
11925P	Wildland Monitor with 1.5" NPT Female
3462P	Remote Electric Monitor of your choice (Akron, TFT, Elkhart)
23953P	Foot Valve and Strainer 2"
24065P	Chrome Hose Roller Guides on Reel, Double
24066P	Chrome Hose Roller Guides on Reel, Single
24068P	Live Hose Tray for 200' of Hose
24082P	Spare Tire Bracket
24083P	Hydrant Fill 1.5"
24083-2.5P	Hydrant Fill 2.5"
24192P	23 hp Centrifugal Pump & Engine
24193P	CFE 26hp Diesel High Pressure Pump
25012P	IntelliTank Water Level Gauge
25013P	IntelliTank Foam Level Gauge

# END MOUNTS & TOP MOUNTS



## FRONT BUMPER

Front bumper customizations include discharge and monitor options.



## BUCKSTOP BUMPER

Buckstop Bumper with extra discharge.



## IN CAB CONTROL PANEL

Control engine, monitor, and foam system from inside truck cab.



## SPARE TIRE BRACKET

Increase the amount of available space in your truck bed and make it easy to access your spare.



## MONITOR

Elkhart Sidewinder Monitor mounted on bumper.

## SOUTHWESTERN POLK COUNTY

End Mount with Aluminum Electric reel, dual high-rise Hose roller Guides, Foam-Flo™, Hydrant Fill, Equipment Baskets, and front bumper mounted Monitor.



## CAPSTONE FIRE MANAGEMENT

Top Mount with standard Steel Electric reel, Hose Roller Guide, Foam-Flo™, Liquid Level Gauges, and Equipment Box.



## BROOKTRAILS FIRE DEPARTMENT

Top Mount with standard Steel Electric reel, dual high-rise Hose roller Guides, and Foam-Flo™.





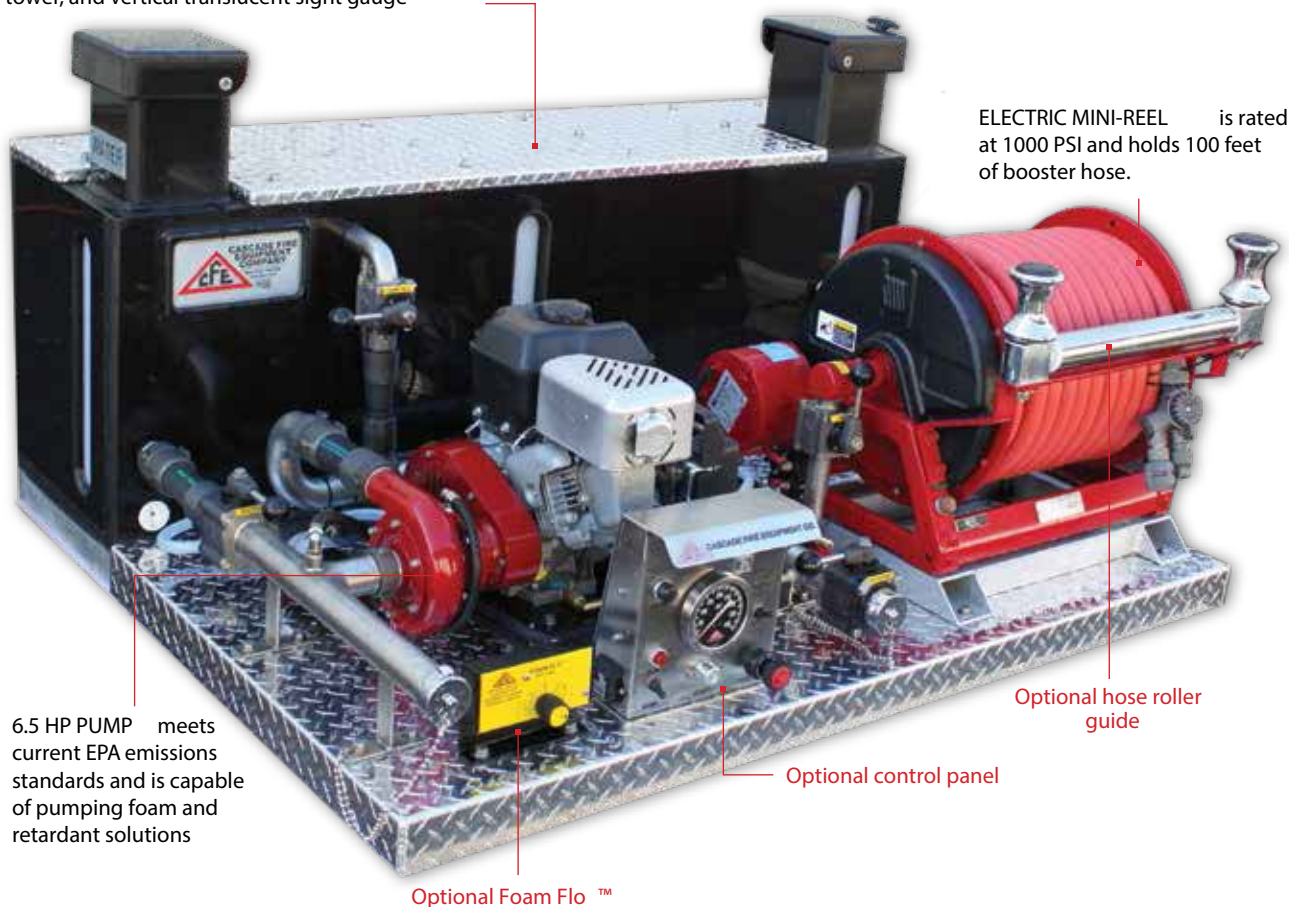
## LIGHT &amp; ATV SLIP-ONS

# LIGHT & ATV SLIP-ONS

## STANDARD EQUIPMENT

STANDARD SLIP-ON EQUIPMENT on Light and ATV Slip-On firefighting units include a polypropylene tank, 6.5 HP pump and engine, electric mini hose reel, full flow all stainless steel plumbing, diamond plate surface, and additional standards listed at right.

POLYPROPYLENE TANK includes vent, manual fill tower, and vertical translucent sight gauge



6.5 HP PUMP meets current EPA emissions standards and is capable of pumping foam and retardant solutions

ELECTRIC MINI-REEL is rated at 1000 PSI and holds 100 feet of booster hose.

Optional hose roller guide

Optional control panel

Optional Foam Flo™

## ATV SLIP-ON CAPACITIES & WEIGHTS

ATV	CAPACITY	EMPTY WEIGHT	FULL WEIGHT
24052	50 gal	300	700
24046	75 gal	350	972
24048	100 gal	400	1239
24050	125 gal	425	1462

## OPTIONAL EQUIPMENT

PART	DESCRIPTION
11923P	Foam-Flo™ with Foam Cell
24062P	Mini Control Panel
1663SP	EF-24-23-24 Electric Steel Hose Reel
24019	BE Pump
	Stokes Carrier
	Tailgate with Lights

# LIGHT & ATV SLIP-ONS OPTIONAL EQUIPMENT



## MINI CONTROL PANEL

Stainless Steel panel with all the controls in one location. Includes panel light, electric primer valve, pressure gauge, engine On/Off light, engine On/Off switch, and engine throttle control.



## FOAM-FLO™

Foam-Flo™ with Foam Cell proportions Class A Foam with selector valve controlling percentage.



## HOSE REEL OPTIONS

Options for steel and aluminum reels (Size permitting), motor HP, and chrome hose roller guides installed in one or both sides in high or low configuration.



## BE PUMP

Self-priming positive displacement pump with 6.5 Hp vanguard engine with electric start.



## WAVELAND VFD

ATV unit with standard Electric Mini-Reel and 6.5HP Super Mini-Pump, and optional Mini-Control Panel, Foam-Flo™ proportioner with Foam Cell, and Stokes Carrier.

## GRAYBACK FORESTRY

ATV unit with standard Electric Mini-Reel and 6.5HP Super Mini-Pump, and optional Mini-Control Panel, Hose Roller Guide, and Tailgate with lights.



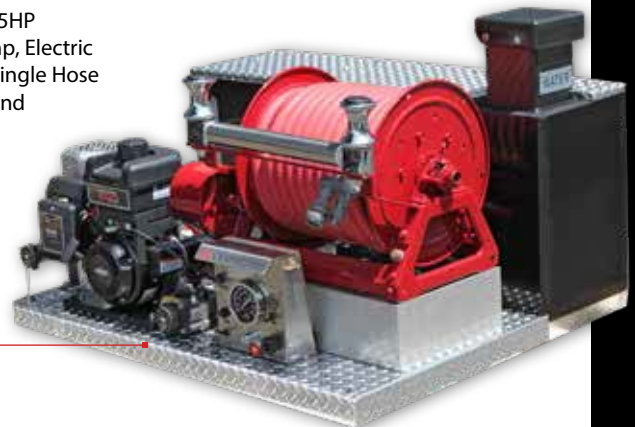
## B.I.A.

ATV unit with Steel Electric Hose Reel, 6.5HP Super-Mini Pump, and optional Control Panel.



## NORTH CAROLINA WILDLIFE

ATV unit with 6.5HP Super-Mini Pump, Electric Mini-Reel with single Hose Roller Bracket, and Control Panel





## CUSTOM TOOLBOXES

**TOOL BOXES**

Tool boxes are the best way to organize your firefighting vehicle. You decide the best size and configuration for the tools you carry.

**EQUIPMENT DRAWERS**

Custom drawer assemblies are built to take abuse with tough as nails drawer slides.

**LIVE HOSE TRAY**

Hose Tray has a turtle tile base, a rotary joint for hose removal from either side, and a full-flow ball valve to control water flow.

**SUCTION HOSE BOX**

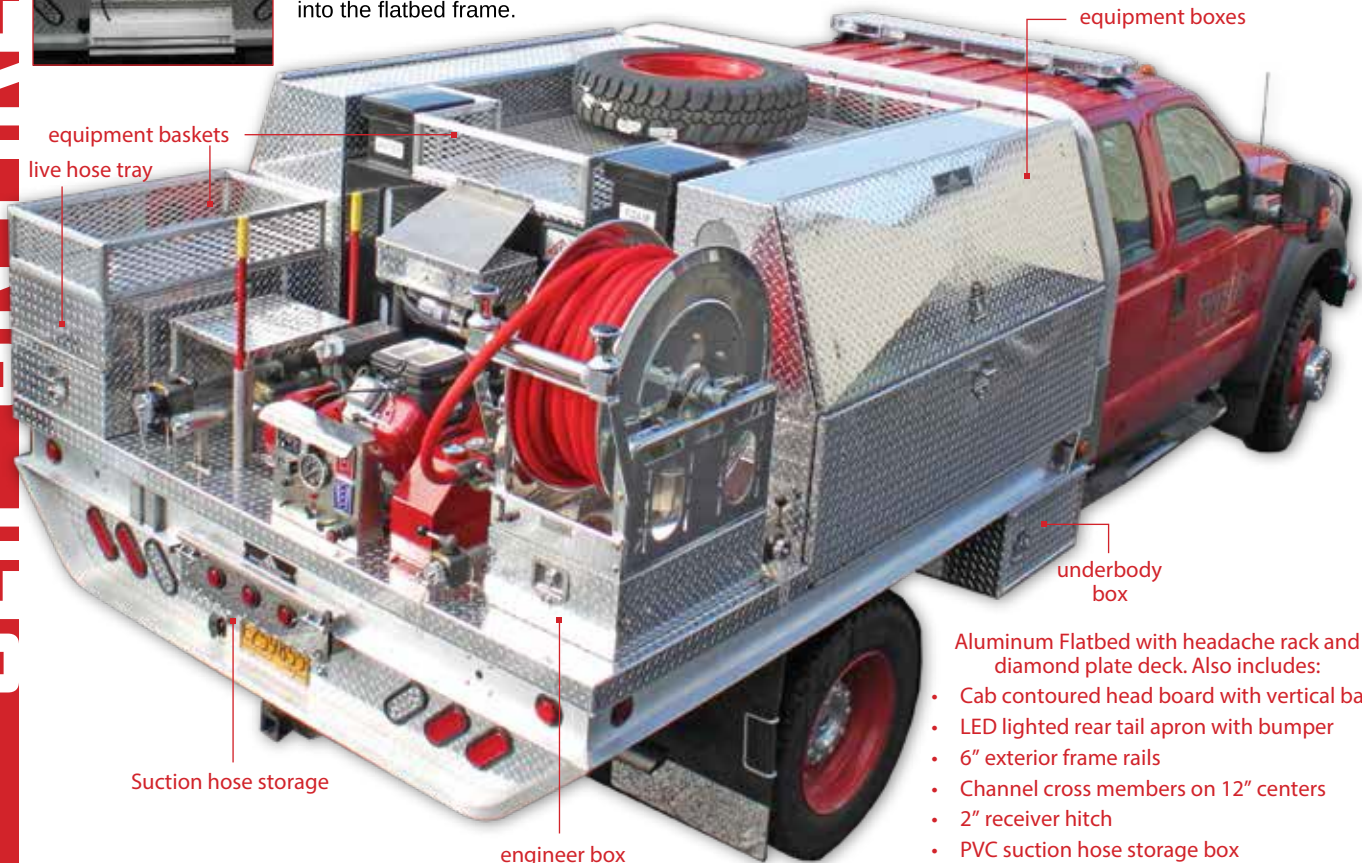
Suction Hose Box is integrated into the flatbed frame.

**CUSTOM TOOLBOXES**

Expand your gear capacity with tool boxes, equipment baskets, drawers, and hose trays. Constructed from aluminum which is half the weight of steel, allowing for a heavier load and better fuel economy. Toolboxes are built to your exact specifications, with a wide variety of configurations and styles available.

**TOOLBOX FEATURES**

- ③ Constructed of 1/8" marine grade weather-resistant diamond plate aluminum
- ③ No-sag doors
- ③ Stainless steel continuous piano-style hinge with a 1/4" pin
- ③ Stainless steel T-handle locks and locking mechanisms
- ③ Sturdy chain secures open lid
- ③ Reinforced angle bracing welded in corners (larger boxes)
- ③ Clean Seal® automotive weather stripping
- ③ Rain master doors which overlap the weather stripping
- ③ Cross break on doors for increased strength
- ③ Stainless steel Torx screws
- ③ 5 year manufacturer's warranty



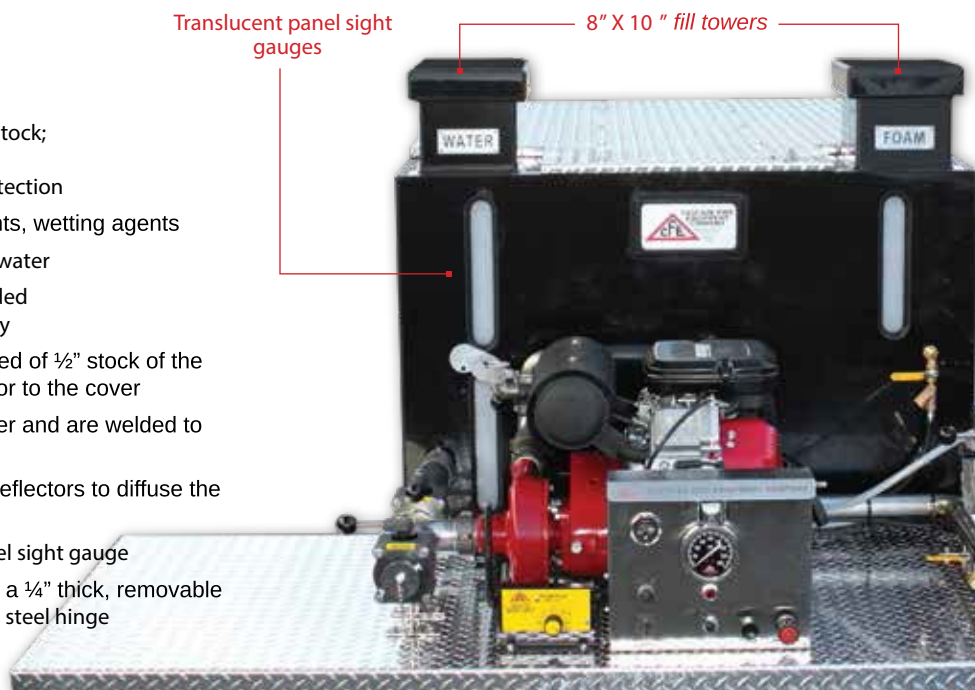
- Aluminum Flatbed with headache rack and diamond plate deck. Also includes:
- Cab contoured head board with vertical bars
  - LED lighted rear tail apron with bumper
  - 6" exterior frame rails
  - Channel cross members on 12" centers
  - 2" receiver hitch
  - PVC suction hose storage box

# POLYPROPYLENE TANKS

Polypropylene Tanks are ideal for use as water tanks for Slip-On Firefighting Units. They can be manufactured in a wide variety of configurations, dimensions and sizes. Partitions designed to provide maximum water flow and are equipped with vent and air holes to permit movement of air and water between compartments.

## WATER TANK FEATURES

- ③ Constructed of ½" thick polypropylene sheet stock; non-corrosive stress relieved thermo-plastic, natural black, U.V. stabilized for maximum protection
- ③ Compatible with firefighting foams, retardants, wetting agents
- ③ Materials meet FDA requirements for potable water
- ③ All joints and seams are extrusion double welded and tested for maximum strength and integrity
- ③ Transverse baffle partitions are manufactured of ½" stock of the same material and extend from the tank floor to the cover
- ③ All baffle partitions interlock with one another and are welded to each other and to the walls of the tank
- ③ Tank fill connections are backed with flow deflectors to diffuse the stream entering the tank
- ③ End wall of tank has a vertical translucent panel sight gauge
- ③ Combination vent and manual fill tower has a ¼" thick, removable polypropylene screen and cover with stainless steel hinge
- ③ Tank is equipped with anti-cavitation device



## WATER TANK INCLUDES

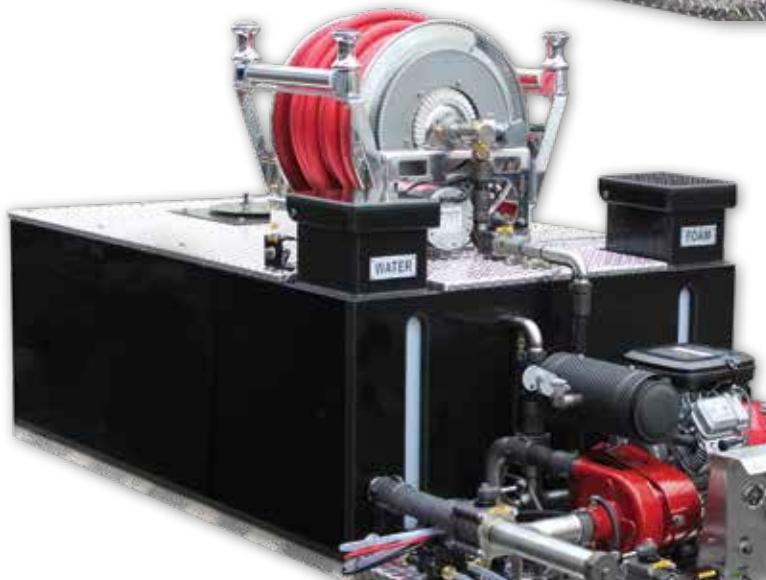
- ③ One (1) fill tower with removable screen and cover
- ③ One (1) sump with anti-swirl plate and drain fitting
- ③ One (1) vent overflow pipe
- ③ One (1) 1" NPT tank fill fitting
- ③ One (1) 2" NPT tank suction fitting
- ③ One (1) sight gauge

## FOAM TANK INCLUDES

- ③ One (1) fill tower with removable screen and cover
- ③ One (1) sight gauge
- ③ Drain

PART	SIZE (GAL.)	WT.
31000	50	153 lbs.
31001	60	163 lbs.
31002	75	178 lbs.
31003	100	203 lbs.
31004	150	253 lbs.
31005	200	303 lbs.
31006	250	353 lbs.
31007	300	403 lbs.
31008	400	503 lbs.
31009	500	603 lbs.
31010	600	703 lbs.
31011	700	803 lbs.
31012	750	853 lbs.
31013	800	903 lbs.

OPTIONS	
31014	5 Gallon Foam Cell
31015	10 Gallon Foam Cell
31016	15 Gallon Foam Cell
31017	20 Gallon Foam Cell
31018	30 Gallon Foam Cell
31019	40 Gallon Foam Cell
31020	Reel Mount Blocks (2)
31022	Misc. Mount Block
31023	Wheel Wells
31026	Diamond Plate (per square foot)





# CASCADE CENTRIFUGAL PUMPS



## CF-120

Designed and manufactured by Cascade Fire Equipment the CF-120 is a pump ideally suited for use on Slip-On Units or as a high pressure, lightweight portable pump. The CF-120 can pump up to 120 GPM and up to 300 PSI. When equipped with a carrying base and integrated gas tank it makes a very good portable pump. An 18hp Briggs and Stratton engine drives the pump, which meets the volumes and pressures needed in wildland firefighting. The CF-120 provides trouble-free service under firefighting conditions and replacement parts available at a reasonable price with easy installation.

Available with carrying frame and integrated 3-gallon gas tank, hand primer, and liquid-filled pressure gauge when used as a portable pump. The truck mount model has a 3/4" thick polypropylene mounting base, remote 4-gallon gas tank with fuel line, and quick-connect hand primer



PUMP SPECIFICATIONS	
TYPE	Single Stage Centrifugal
SUCTION	2" NPSH Male
DISCHARGE	1½" NH Male
VOLUTE/ BODY	High strength aluminum alloy, hard coat anodized for extra corrosion resistance
IMPELLER	Fully enclosed all bronze construction, double hubs to balance hydraulic thrust, balanced to prevent vibration
WEAR RING	Bronze, long-wearing
SEAL	Carbon/ceramic mechanical
BEARINGS	Sealed ball bearings
PRIMER	Manual
DIMENSIONS	30¼" (24" w/out carry frame) L x 19½" W x 18½" (17¼" w/out carry frame)
WEIGHT	140 lbs.

CF-120 PERFORMANCE						
PSI	50	100	150	200	250	300
GPM	120	110	100	80	50	23

## CF-130

The CF-130 is powered by a 23 hp Briggs & Stratton Vanguard Engine with a manual recoil and a 12-volt electric starter. Same specifications as the CF-120 but with an increase in horsepower over the CF-120 for more volume and higher pressure.

CF-130 PERFORMANCE										
PSI	100	125	150	175	200	225	250	275	300	325
GPM	132	130	120	108	100	90	80	60	47	15

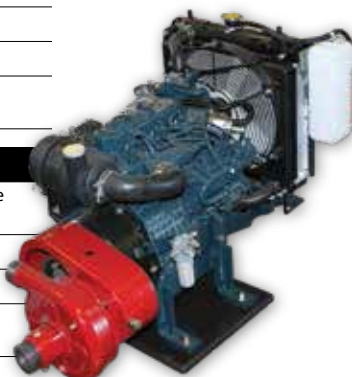
CF-120 & CF-130 ENGINE SPECIFICATIONS	
ENGINE	Briggs and Stratton Vanguard V Twin air-cooled, overhead valve design
OUTPUT	3600 RPM, 4 Cycle
STARTER	12 Volt electric and manual recoil
LUBE	Full pressure lubrication system with automotive style filter

CF-126 ENGINE SPECIFICATIONS	
ENGINE	Kubota, vertical, water-cooled, 4-cycle diesel
OUTPUT	24.8HP @ 3600 RPM
STARTER	12 Volt electric
LUBE	Full pressure lubrication system with automotive style filter

## CF-126

The CF-126 (Part No. 24193) is a high pressure centrifugal pump powered by a 26hp diesel Kubota Engine. The engine is an in-line 3 cylinder, water-cooled, overhead valve delivering a maximum output of 26.5 hp @ 3600 RPM, 58.1 cubic inches displacement, 4-cycle, diesel fueled. Body and head are made of high-strength aluminum alloy, anodized for superior corrosion resistance. Impeller is made of high-strength, corrosion resistant bronze, fully enclosed, double-hubbed to balance hydraulic thrust, mechanically-balanced to eliminate vibration.

CF-126 PERFORMANCE						
PSI	50	100	125	200	250	325
GPM	118	112	105	80	62	26



# CASCADE MINI PUMPS

## CF MINI-PUMP SPECIFICATIONS

ENGINE	Honda 2.5HP at 3600 RPM 4 Stroke, 1 Cylinder, Air Cooled
STARTER	Manual recoil and electric
SUCTION	1½"
DISCHARGE	1½"
DIMENSIONS	15¾" L x 10¾" W x 15.625" H
WEIGHT	19.3 lbs.

## CF MINI-PUMP PERFORMANCE

PSI	0	26	57	85
GPM	68	50	25	Shutoff

## CF SUPER MINI-PUMP SPECIFICATIONS

ENGINE	Briggs & Stratton 6.5HP at 3600 RPM 4 Stroke, 1 Cylinder, Air Cooled
STARTER	Manual recoil and electric
SUCTION	1½"
DISCHARGE	1½"
DIMENSIONS	18" L x 18" W x 16" H
WEIGHT	59 lbs.

## CF SUPER MINI-PUMP PERFORMANCE

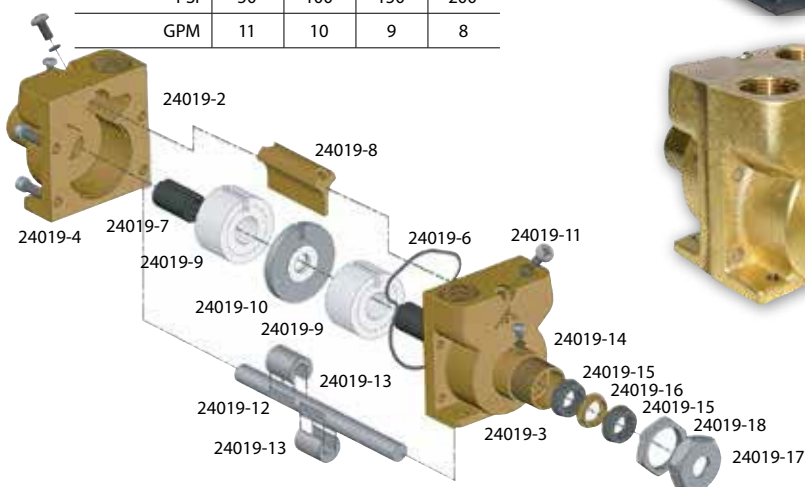
PSI	25	50	100
GPM	90	86	38

## BE PUMP SPECIFICATIONS

ENGINE	Briggs & Stratton 6.5HP at 3600 RPM 4 Stroke, 1 Cylinder, Air Cooled
STARTER	Manual recoil and electric
SUCTION	1"
DISCHARGE	1"
DIMENSIONS	17½" L x 15" W x 14" H
WEIGHT	49 lbs.

## BE PUMP PERFORMANCE

PSI	50	100	150	200
GPM	11	10	9	8



## CF MINI-PUMP

Cascade's Mini-Pump unit is designed for use on lightweight slip-on units that require foam pumping capabilities. The pump is powered by a small and lightweight 4-stroke Honda engine that meets the current emissions standards of the US EPA. Additional features:

- ③ USFS approved spark arrestor
- ③ Inlet and outlet protective caps
- ③ Hand primer

## CF SUPER MINI-PUMP

The CF Super Mini-Pump is a close-coupled single stage centrifugal pump capable of pumping foam and retardant solutions. Powered by a small and lightweight 6.5hp Briggs and Stratton engine that meets the current emissions standards of the US EPA.

Additional features:

- ③ Lightweight aluminum alloy pump parts anodized for corrosion resistance
- ③ USFS approved spark arrestor
- ③ Inlet and outlet protective cap
- ③ Hand primer

## BE PUMP & ENGINE

The extremely lightweight BE Pump produces adequate pressure and volume for fire suppression, spraying and general purpose use. The small size of the pump is particularly suited for use where water supply is limited and where weight, price and practicability are factors.

## REPAIR PARTS FOR BE PUMP

24019-1	Pump Head
24019-2	Housing - Rear half
24019-3	Housing - Front half
24019-4	Housing Screw
24019-5	Housing Nut (for non-CFE brands)
24019-6	Housing Gasket
24019-7	Bushing
24019-8	Impeller Guide
24019-9	Impeller
24019-10	Separator
24019-11	Impeller Guide Screw
24019-12	Shaft
24019-13	Eccentric
24019-14	Bushing Retainer Screw
24019-15	Shaft Seal
24019-16	Shaft Seal Spacer
24019-17	Gland Nut
24019-18	Locknut





Aluminum Booster Reel with Single Hose Roller Guide



Steel Booster Reel with High Mount Roller Guide



Steel Booster Reel with High Mount and Low Mount Guides



Aluminum Booster Reel with Single High Mount Roller Guide



Aluminum Booster Reel with Dual High Mount Roller Guides

## HANNAY HOSE REELS

### BOOSTER REEL FEATURES

The Standard Painted Steel Booster Hannay Hose Reel is the dependable, rugged reel that has set the standard for fire service reels for more than 50 years. The "Super Booster" (aluminum construction) reel weighs up to 30% less than standard booster reels and features an all-aluminum frame and drum, chip-proof polished aluminum discs, and plated drive chain, sprocket, hub assembly, swivel joint and fastenings. No painting or finishing is required. Both reels have the same construction features.

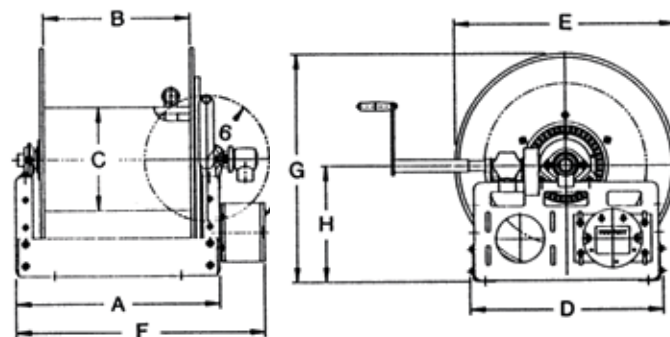
- ③ Inlet is 1" female NPT 90° swivel joint rated at 1000 PSI. Straight joint is available, please specify when ordering
- ③ Outlet Riser is 1" male NST or NPSH. Female outlet or other threads are available and must be specified
- ③ The rewind has a chain and sprocket drive powered by 12-volt electric motor. 24-volt electric motor is optional. Call for pricing
- ③ Remote push-button operating switch, solenoid and connectors are included with electric rewind models
- ③ Vertical or 30° mechanisms are optional at extra cost and must be specified
- ③ A pinion shaft brake is standard

### STEEL & ALUMINUM BOOSTER REELS

PART	MATERIAL	HOSE CAPACITY (FT.)		REEL DIMENSIONS IN INCHES								APPROX WT (LB)
		OD: 1-1/4"	ID: 1"	A	B	C	D	E	F	G	H	
11662S	STEEL	150	100	29.5	24	10.5	20.5	21.62	34.25	21.25	12.12	144
11662A	ALUM											122
11663S	STEEL			21	15.5	10.5	20.5	23	25.75	23.5	12.12	134
11663A	ALUM											117
11664S	STEEL	250	150	27.5	22	10.5	20.5	23	32.25	23.5	12.12	147
11664A	ALUM											124
11665S	STEEL	300	200	25.5	20	10.5	25.5	24.75	32.25	27.88	15.5	155
11665A	ALUM											129
11666S	STEEL	400	250	31.5	26	10.5	25.5	24.75	38.25	27.88	15.5	168
11666A	ALUM											135
11667S	STEEL	200	100	13.5	8	10.5	25.5	28.75	18.25	29.88	15.5	157
11667A	ALUM											133
11668S	STEEL	250	150	17	11.5	10.5	25.5	28.75	21.75	29.88	15.5	157
11668A	ALUM											133
11669S	STEEL	400	200	21	15.5	10.5	25.5	28.75	27.75	29.88	15.5	163
11669A	ALUM											137
11670S	STEEL	500	250	25.5	20	10.5	25.5	28.75	32.25	29.88	15.5	171
11670A	ALUM											140
11671S	STEEL	550	300	27.5	22	10.5	25.5	28.75	34.25	29.88	15.5	175
11671A	ALUM											142
11672S	STEEL	650	350	31.5	26	10.5	25.5	28.75	38.25	29.88	15.5	184
11672A	ALUM											147

#### NOTES:

- ③ The "F" dimension shown is for non-explosion proof motors. Add 2" to "F" dimension for explosion proof motors.
- ③ The "E" dimension shown is maximum without crank. Add 10" when crank is in rewind position.
- ③ Weights listed are for electric manual rewind reels. Add approx. 40 lb for electric models.



## BOOSTER REEL OPTIONS

Hose Reel Options for Hannay Reels include chrome Hose Roller Guides to speed the handling of the hose and reduce wear and damage. Hose Roller Guides can be installed on one or both sides of the reel, in high-mount, top-wind position or low-mount, bottom-wind position. The 12 Volt 1/3 HP motor can be substituted with either a 1/2 HP or 2/3 HP.

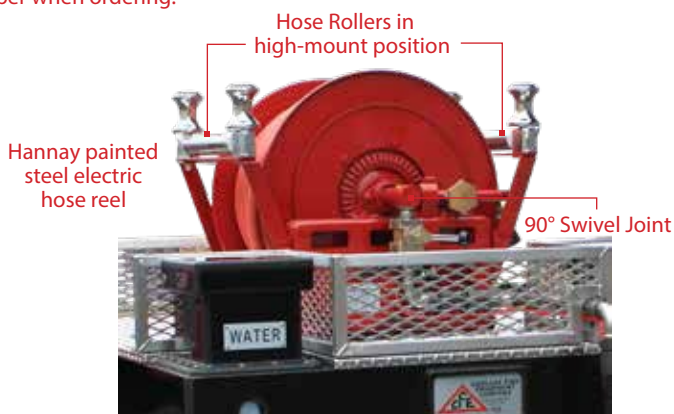
**NOTE: These are for Hannay Reels only. Please specify model and serial number when ordering.**

BOOSTER HOSE REEL OPTIONS	
24065	Chrome Hose Rollers w/ Double Brackets
24066	Chrome Hose Roller w/Single Bracket
11733	1" Flanged Riser
11671	Motor: 12 Volt 1/2 hp Explosion Proof
11679	Motor: 12 Volt 2/3 hp Explosion Proof

## ROLLER ASSEMBLY

Roller and Spool Assembly speeds handling and reduces wear and tear on hose. Assembly can be factory-installed, when specified as part of reel order, or can be ordered as an accessory item for field installation on a reel or other equipment. Buffed stainless steel rollers resist corrosion, pitting and abrasion. Polished, chrome-plated spools. Delrin bearing surfaces provide for quiet operation and minimum wear.

HOSE ROLLER ASSEMBLY	
11742	Roller & Spool Assembly
11743	Mounting Bracket: High Mount
11744	Mounting Bracket: Low Mount



## REPLACEMENT SWIVEL JOINTS

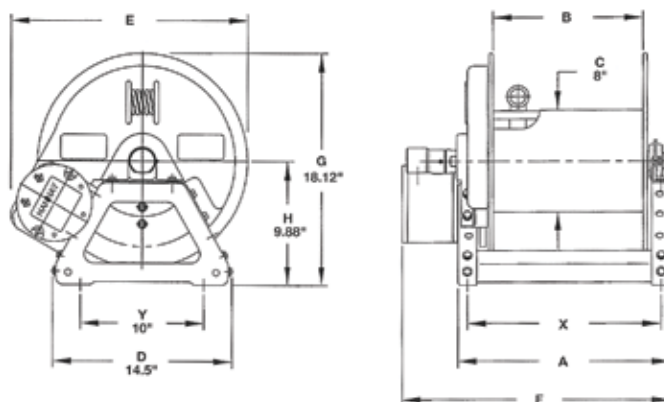
Replacement swivel joints for Hannay hose reels are available in 90° or straight and have 1" NPT female fittings.



## HANNAY EF 4000 MINI REEL

This compact "mini" reel can handle single 3/4" or 1" booster hose, and is ideal for use in restricted spaces or on slip-on units. It is also well-suited for use in brush and forest firefighting vehicles. This reel works with Hannay Roller Assemblies (see this page), sold separately.

- ③ Lightweight, compact reels designed for long lengths of hose
- ③ Comet brake is standard on power rewind reels.
- ③ Standard inlet: 90° ball bearing swivel joint, 1" female NPT threads
- ③ Standard outlet: 1" female NPT threads
- ③ Optional rollers: specify roller position when ordering



PART	HOSE CAPACITY (FT.)							WGT (LB)
	ID: 3/4"	1"	A	B	E	F	X	
11655E	OD: 19/16"	19/16"	21	16	19	27	19.5	64