



THE BEST EQUIPMENT ADAPTS TO YOUR NEEDS



Rosenbauer FX body styles feature a wide range of compartment configurations so that you can build the truck you want. Rosenbauer also provides a wide assortment of shelves, roll-out trays, and equipment mounting provisions to keep all your equipment organized for easy access.



DISCOVER INNOVATION. EXPERIENCE TECHNOLOGY.

ROSENBAUERAMERICA.COM

INFO@ROSENBAUERAMERICA.COM

[f ROSENBAUER GROUP](#)

[@ROSYPFIRE](#)

[ROSENBAUERFIRE](#)

Rosenbauer South Dakota, LLC
100 Third Street; Lyons, SD 57041
605.543.5591

Rosenbauer Minnesota, LLC
5181 260th Street; Wyoming, MN 55092
651.462.1000

Rosenbauer Motors, LLC
5190 260th Street; Wyoming, MN 55092
651.462.1000

Rosenbauer Aerials, LLC
870 S Broad Street; Fremont, NE 68025
402.721.7622



SOUTH DAKOTA, LLC. #011714-RSD | MINNESOTA, LLC. #011714-RMN

FX BODY



FX BODY

WWW.ROSENBAUERAMERICA.COM



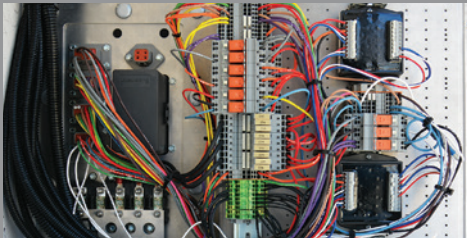
SPACE FOR YOUR LARGEST EQUIPMENT
Flush-mounted hinged doors with stainless steel hardware allow full-width storage. Compartments can also be customized to fit your needs with shelves, roll-out trays, and equipment mounts.



DOORS DESIGNED FOR SAFETY AND CONVENIENCE
Roll-up doors give you easy access to adjustable shelves, roll-out trays, and tool boards without extending into the roadway for added safety.



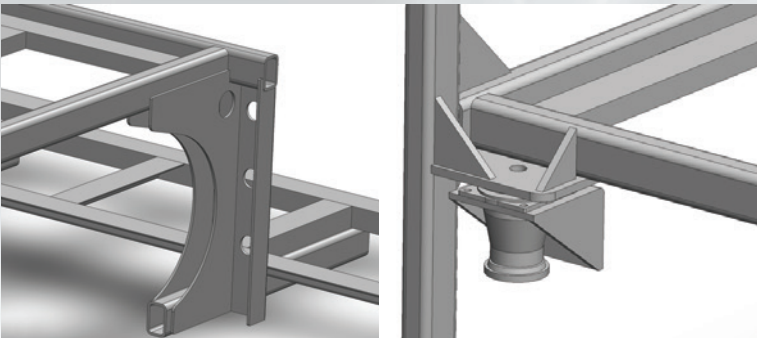
WIRING YOU CAN RELY ON
Heavy gauge function and color-coded wiring along with terminal blocks and connectors form the basis for a reliable wiring system. Multiplexing optional.



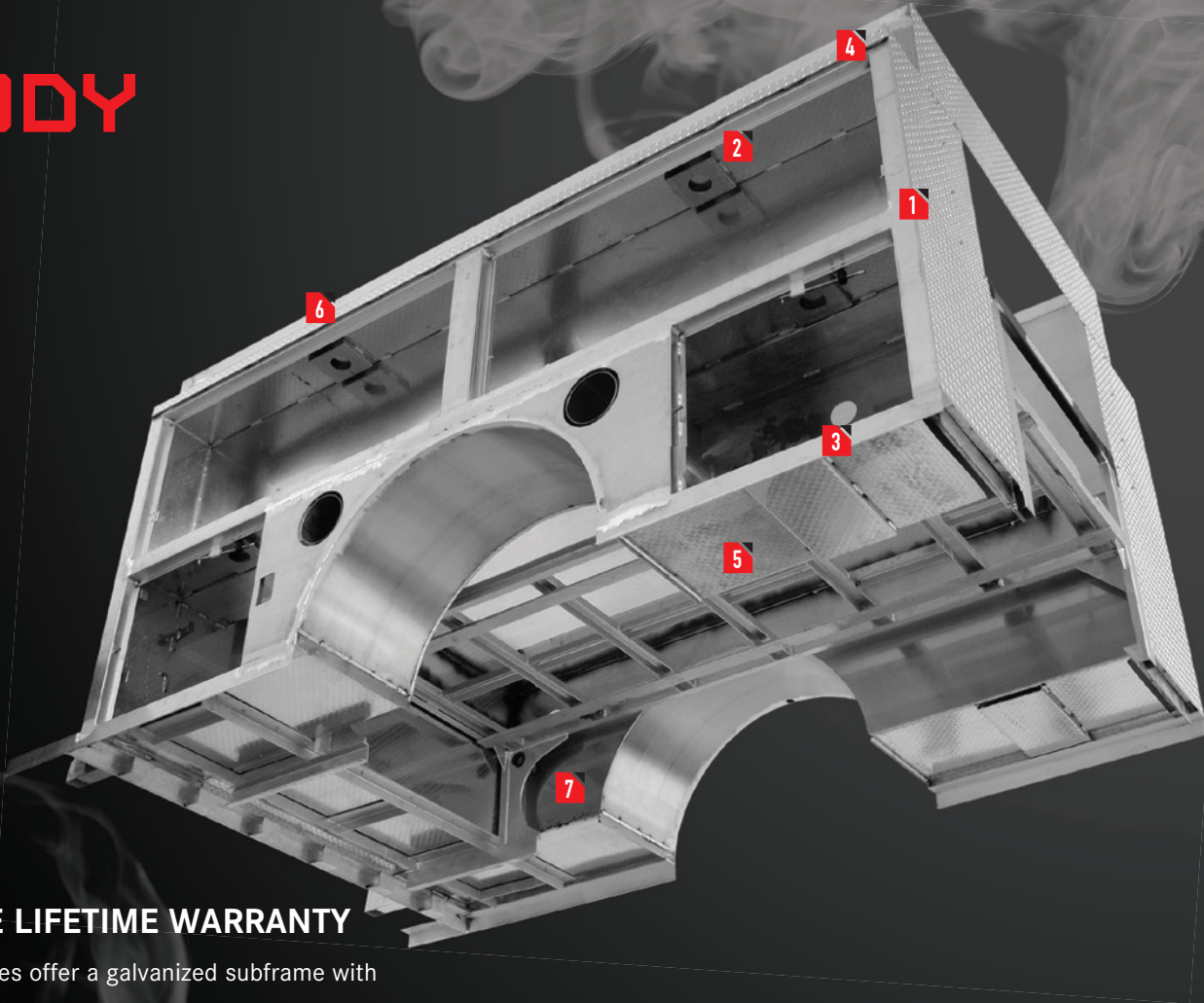
DETAILED, PRECISE PAINT APPLICATION
Rosenbauer's state-of-the-art paint process is environmentally controlled for precise application. Paint is mixed to create or match any shade and then applied and baked for a durable, consistent, high-gloss finish.



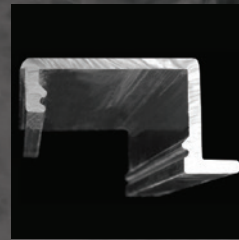
OPTIONAL EXTREME DUTY SUBFRAME
The optional extreme-duty subframe features extra heavy wall steel tubing and double plate steel gussets at the rear. The front is mounted using a specially designed metacone rubber mounting system to absorb road shock and twisting forces.



FX BODY



SUBFRAME LIFETIME WARRANTY
Rosenbauer FX body styles offer a galvanized subframe with a lifetime warranty.



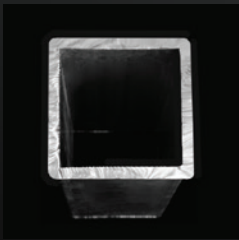
1 Front and Back Door Post Extrusion



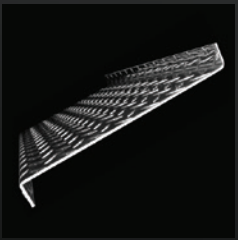
2 Top and Intermediate Door Frame Extrusion



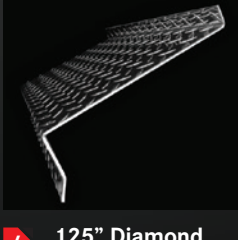
3 Angled Aluminum Body Support Extrusion



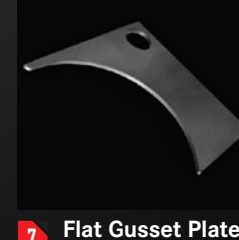
4 Main Framing Extrusion



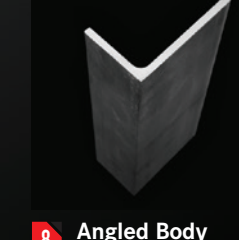
5 .125" Interior Diamond Plate (.190" Optional)



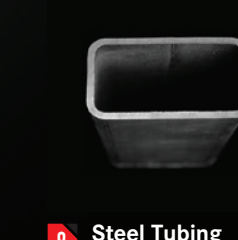
6 .125" Diamond Plate Top Cap (.190" Optional)



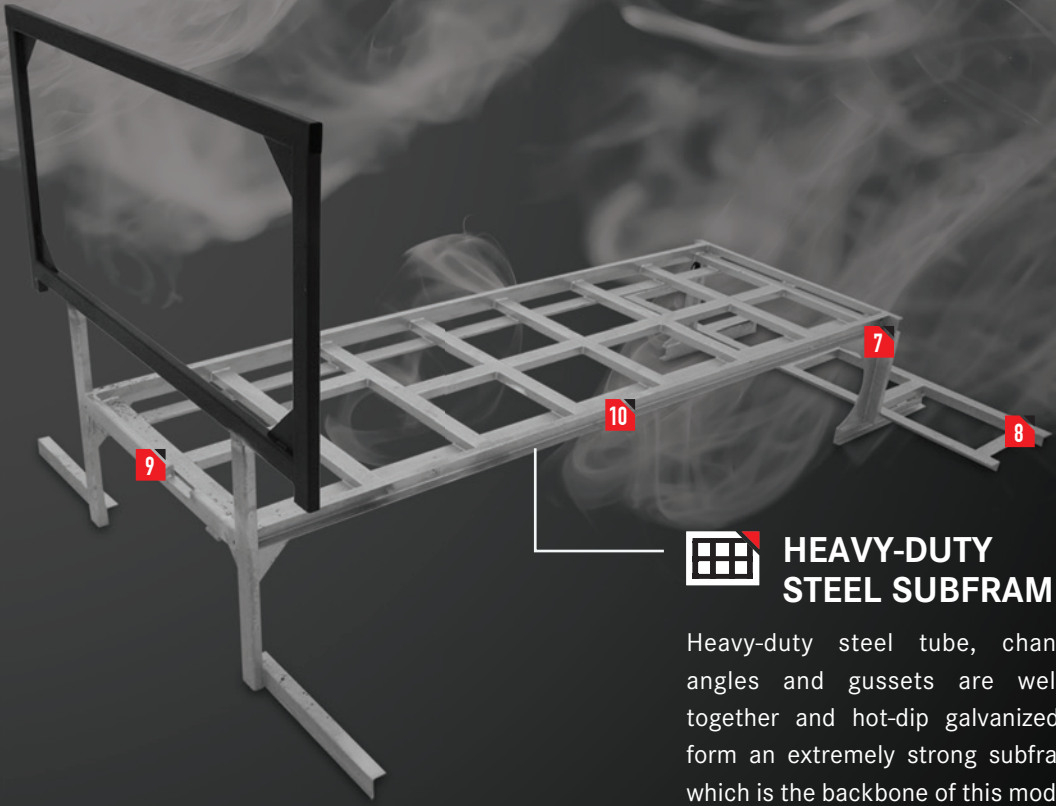
7 Flat Gusset Plate (.375" Steel)



8 Angled Body Outrigger (2" x 3")

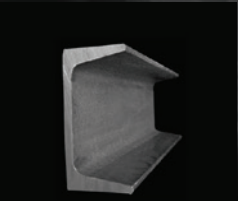


9 Steel Tubing (1.75" x 3")



HEAVY-DUTY STEEL SUBFRAME

Heavy-duty steel tube, channel, angles and gussets are welded together and hot-dip galvanized to form an extremely strong subframe, which is the backbone of this modular body. It is built using formed sheets and heavy duty extrusions.



10 Subframe Channel (1.75" x 3")



AERIAL



COMMERCIAL PUMPER-TANKER



CUSTOM PUMPER