



THE BEST EQUIPMENT ADAPTS TO YOUR NEEDS



EASY PUMP ACCESS

Pump enclosures include large hinged access panels, hinged gauge panels, and brushed stainless steel or black vinyl control panels. Gauges are aligned with valve controls for easy identification.



STORAGE ABUNDANCE

Multiple compartment widths, heights, and depths are available to accommodate various water tank, hose load, and equipment storage requirements.



EASY ACCESS WIRING PANEL

A centrally located electrical panel is provided with aircraft style, waterproof connectors. Wiring diagrams are provided with each unit built.



10-YEAR PAINT WARRANTY

Painted body parts are backed by a 10-year manufacturer's warranty.



ELECTRICAL SYSTEM

Entire electrical system is engineered and tested prior to installation. All wiring is color and function coded every three inches.

ROSENBAUERAMERICA.COM

INFO@ROSENBAUERAMERICA.COM

[ROSENBAUER GROUP](#)

[@ROSYFIRE](#)

[ROSENBAUERFIRE](#)

Rosenbauer South Dakota, LLC
100 Third Street; Lyons, SD 57041
605.543.5591

Rosenbauer Minnesota, LLC
5181 260th Street; Wyoming, MN 55092
651.462.1000

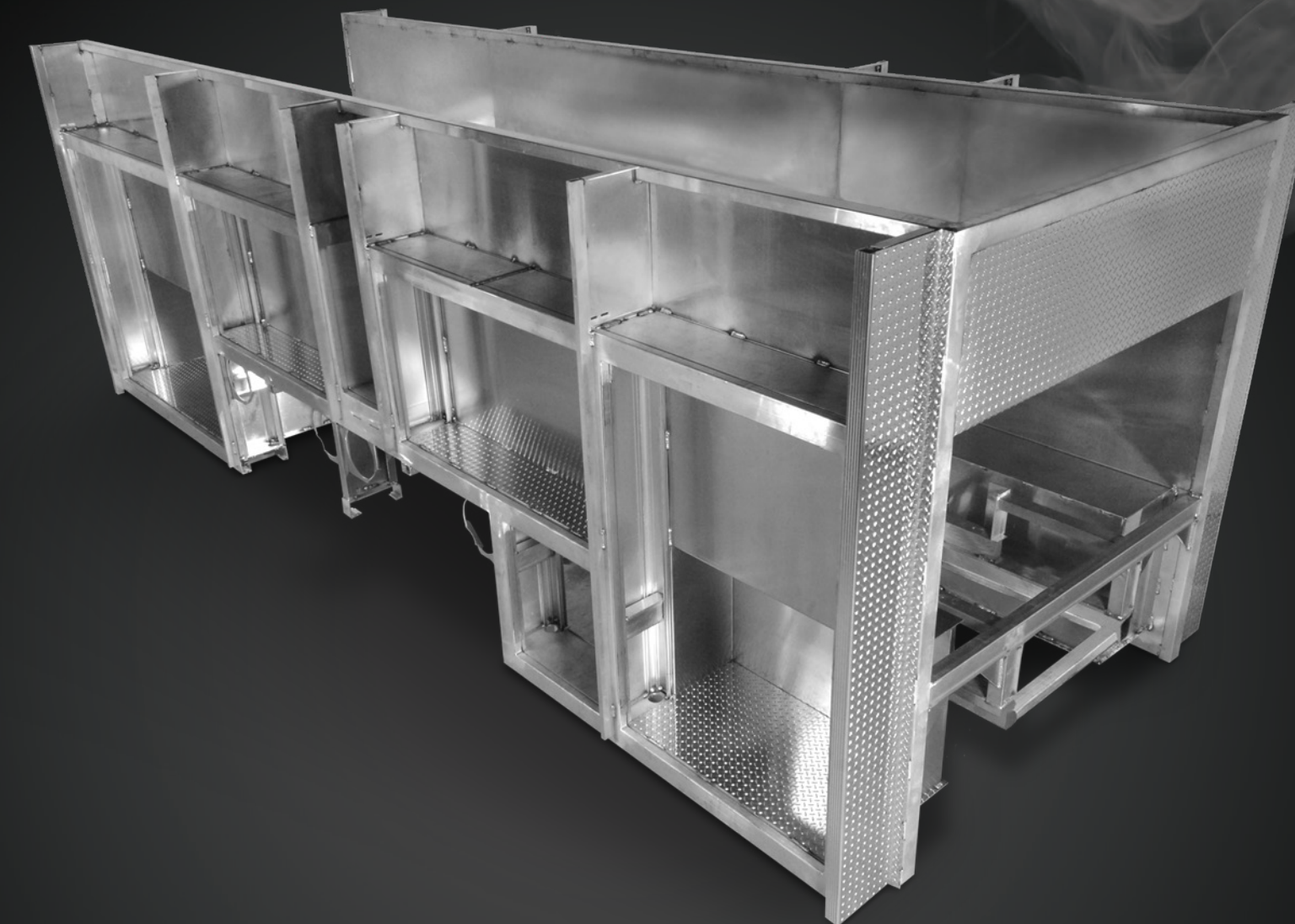
Rosenbauer Motors, LLC
5190 260th Street; Wyoming, MN 55092
651.462.1000

Rosenbauer Aerials, LLC
870 S Broad Street; Fremont, NE 68025
402.721.7622



SOUTH DAKOTA, LLC. #011714-RSD | MINNESOTA, LLC. #011714-RMN

EXT BODY



EXT BODY

WWW.ROSENBAUERAMERICA.COM



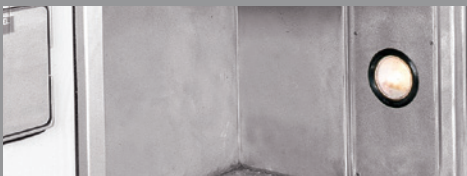
HIGH-QUALITY WHEEL WELL OPTIONS

Easily replaceable wheel well housings are available in four-way aluminum, painted aluminum, or stainless steel. Polished stainless fenderettes and high-density radius inner liners are standard.



FULLY PROTECTED WIRING AND LIGHTING

All wiring is encased within the body extrusions so that weather, equipment, and other gear won't snag or damage it. Lighting is also recessed for protection. Both lights and wiring are easily accessed via bolt-in-place panels.



KEEP EQUIPMENT DRY AND PROTECTED

Roll-up doors open full width and above the compartments, offering increased storage space and service of doors in the closed position. Roll-up doors are isolated in a separate compartment, eliminating moisture inside the storage space.



DURABLE HINGES DON'T SACRIFICE SPACE

Compartment doors feature stainless steel hinges, which are concealed and protected from the elements, and striker pins that extend out of the door opening. Offset hinges also allow doors to open the full width of the compartment.



STORAGE FROM TOP TO BOTTOM

Recessed roll-up doors offer topside equipment mounting so that cord reels and other equipment can be attached to the ceiling for added storage.



EASY ACCESS STEP TO STORAGE AREA

Lower compartment door panels flip down to provide easy access to upper compartment storage area.



EXT BODY

PAYING ATTENTION TO THE SMALLEST DETAILS

At Rosenbauer, we think paying attention to the smallest detail is a big deal. We construct each EXT model from our own patented body design, so every part is given just as much attention as the next. Because the details that go into our trucks are just as important as the results that come with them.



LIFETIME
WARRANTY

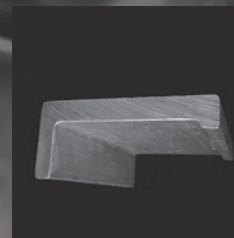
LIFETIME STRUCTURAL WARRANTY

The EXT body is backed with an industry-leading lifetime structural warranty.



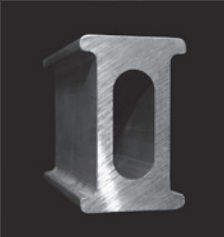
1 Water Tank Support and Subframe (4"x3")

Minimum of six solid aluminum structural "I" beams with .29" flanges.



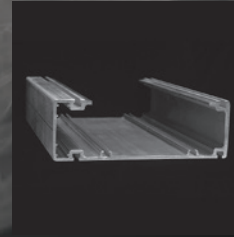
5 Main Frame Sill (4"x1.75"x5")

Full-length body rail made from 6061-T6 aluminum.



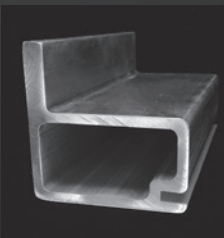
2 Double Wall "I" Beam (4"x2.5")

Used at the rear to support a higher stress load. These thicker beams (.375") are used in combination with other "I" beams to provide the best structure and subframe support.



6 Primary Extrusion (4" x 12")

Full-length vertical extrusions with .2" wall thickness used at body corners and between each compartment.

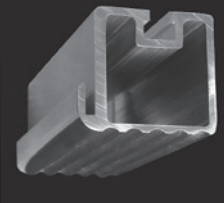


3 Pump Module Extrusion



7 "I" Channels that Don't End Where the Body Starts

EXT model "I" channels run all the way through the truck body for extra support, while conventional body channels are simply welded to the frame. This added strength allows the body to rest on the channel, distributing weight throughout the entire beam and reducing stress at the welds.



4 Front & Rear Body Corners

STERLING STAINLESS STEEL OPTION

The Sterling stainless steel body matches the design of the EXT body. In lieu of extruded aluminum, the Sterling body is built with formed 304 stainless steel to the similar dimensions. Multiple compartment widths, heights, and depths are available to accommodate the needs of the fire department. The stainless steel body design is backed by a 20-year structural warranty.



CUSTOM REAR MOUNT PUMPER



CUSTOM AERIAL



CUSTOM TOP MOUNT PUMPER