



NUMEROUS STORAGE OPTIONS

With a wide variety of compartment arrangements, your storage options are endless.



PULL-OUT TRAYS

Pull-out trays provide storage for quick and convenient accessibility.



QUICK ACCESS

When seconds count, your most important tools are ready to go.



EASY REAR ACCESS PANELS

Easy-to-reach panels with hinged doors at the rear of the body provides the best access.



SAFE AND EASY ROLL-UP DOORS

Roll-up doors give you easy access to adjustable shelves, roll-out trays, and tool boards without extending into the roadway for added safety.





FLUSH-MOUNTED HINGED DOORS

Flush-mounted hinged doors with stainless steel hardware are also available.



DISCOVER INNOVATION. EXPERIENCE TECHNOLOGY.

ROSENBAUERAMERICA.COM INFO@ROSENBAUERAMERICA.COM  ROSENBAUER GROUP  @ROSYFIRE  ROSENBAUERFIRE

Rosenbauer South Dakota, LLC
100 Third Street; Lyons, SD 57041
605.543.5591

Rosenbauer Minnesota, LLC
5181 260th Street; Wyoming, MN 55092
651.462.1000

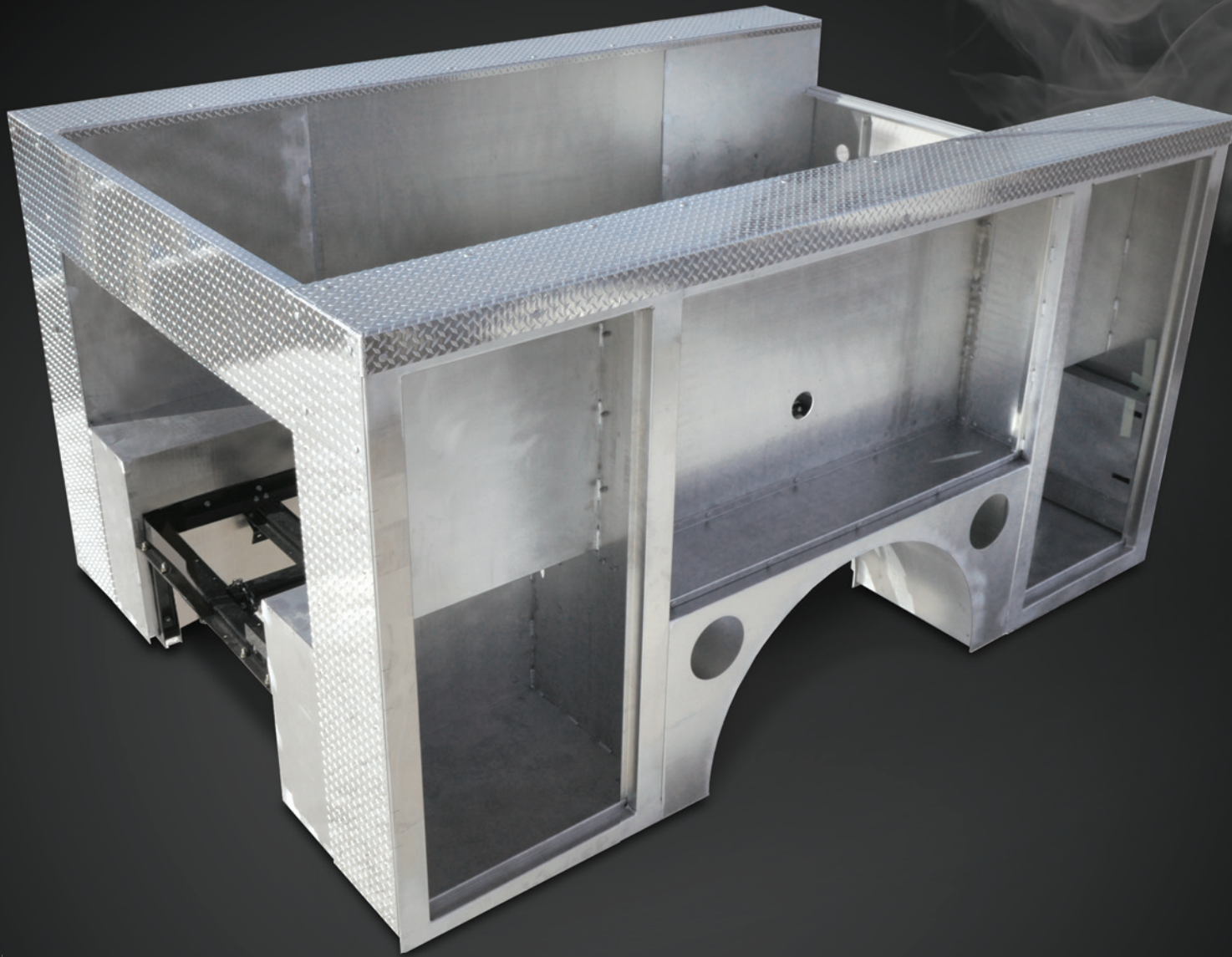
Rosenbauer Motors, LLC
5190 260th Street; Wyoming, MN 55092
651.462.1000

Rosenbauer Aerials, LLC
870 S Broad Street; Fremont, NE 68025
402.721.7622



SOUTH DAKOTA, LLC. #011714-RSD | MINNESOTA, LLC. #011714-RMN

CT BODY



CT BODY

WWW.ROSENBAUERAMERICA.COM



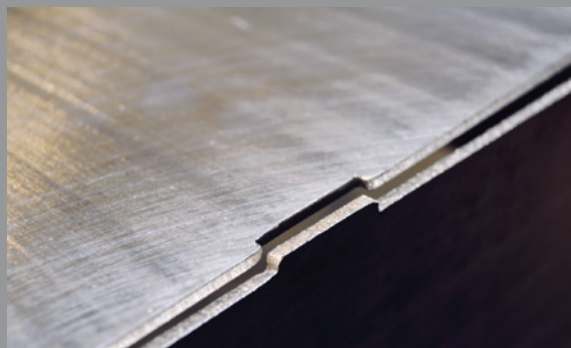
VIBRATION-PROOF BOLT SYSTEM

The subframe and body are assembled using a power-operated, pre-tensioned bolting system called a “huck bolt.” This method draws the bolt to a specific tension, then clamps the nut tight, leaving a constant and vibration-proof fastening system.



TAB AND SLOT PANEL ASSEMBLY

The individual compartment modules are assembled and welded using a “notch and tab” method in which interlocking provisions are designed into the pieces. This technique ensures an accurate fit and allows for perfect replacement parts to be fabricated if the need should arise.



QUALITY FRAME MANUFACTURING

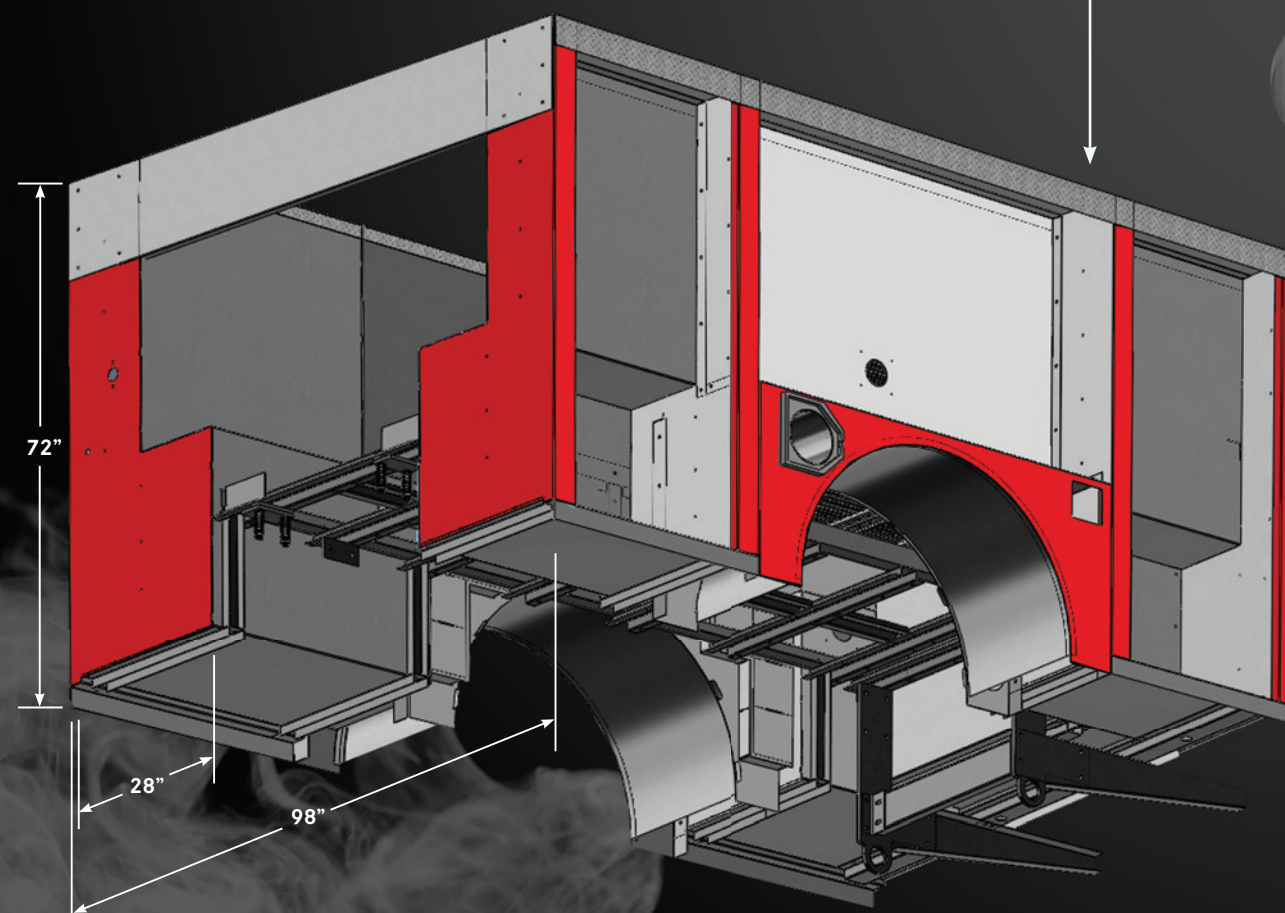
The CT subframe is formed from heavy-duty 7-gauge steel, powder-coated to resist corrosion and attached with a minimum of six mounting points, four of which are spring-loaded to help absorb torsional twist.



CT BODY

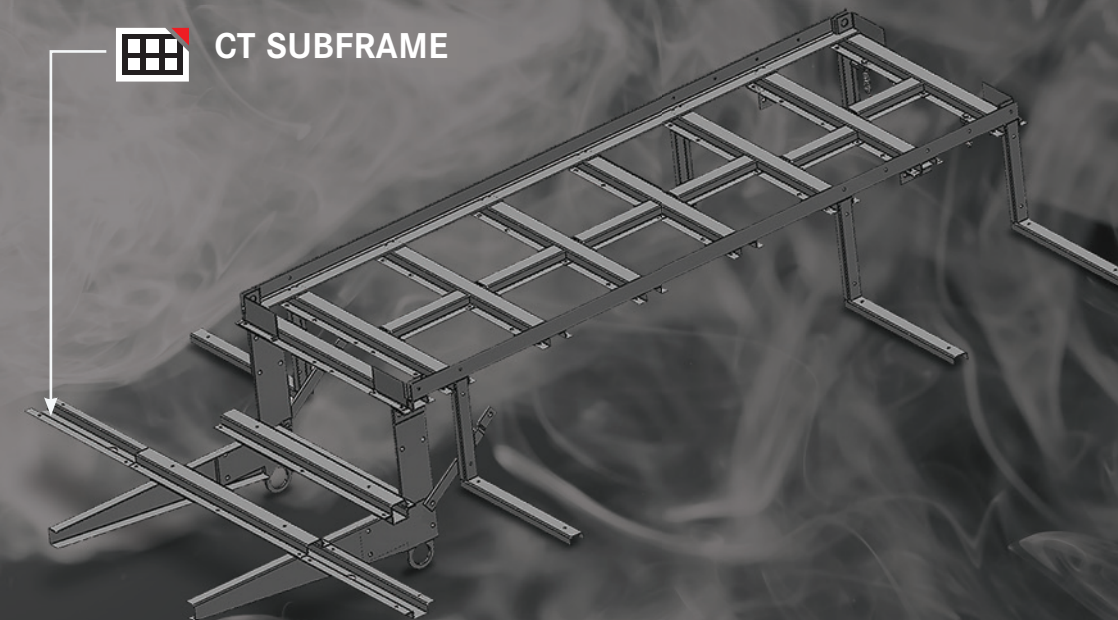
500 CU. FT. DESIGNED FOR TODAY'S EQUIPMENT STORAGE NEEDS

A standard pumper has 180 cubic feet of storage, while a standard rescue pumper has more than 280 cubic feet. However, the new CT body can have over 500 cubic feet of storage space in a variety of configurations to best suit your department's needs.

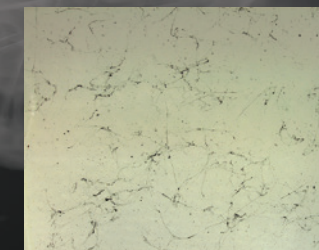


The standard for our compartments is 28 inches deep.
The CT body is available in aluminum, stainless steel or composite.

CT SUBFRAME



Standard



Optional Splatter



Optional Thermo

Choose from natural finish, splatter paint or plastic for your compartment interiors.

IT'S THE BODY OF THE CENTURY

The Rosenbauer CT body styles feature a wide range of compartment configurations and strong, durable bodies so that you can build the truck you want. Tough enough to get the job done.



COMMERCIAL SMART CAB PUMPER



COMMERCIAL TOP MOUNT PUMPER



CUSTOM PUMPER