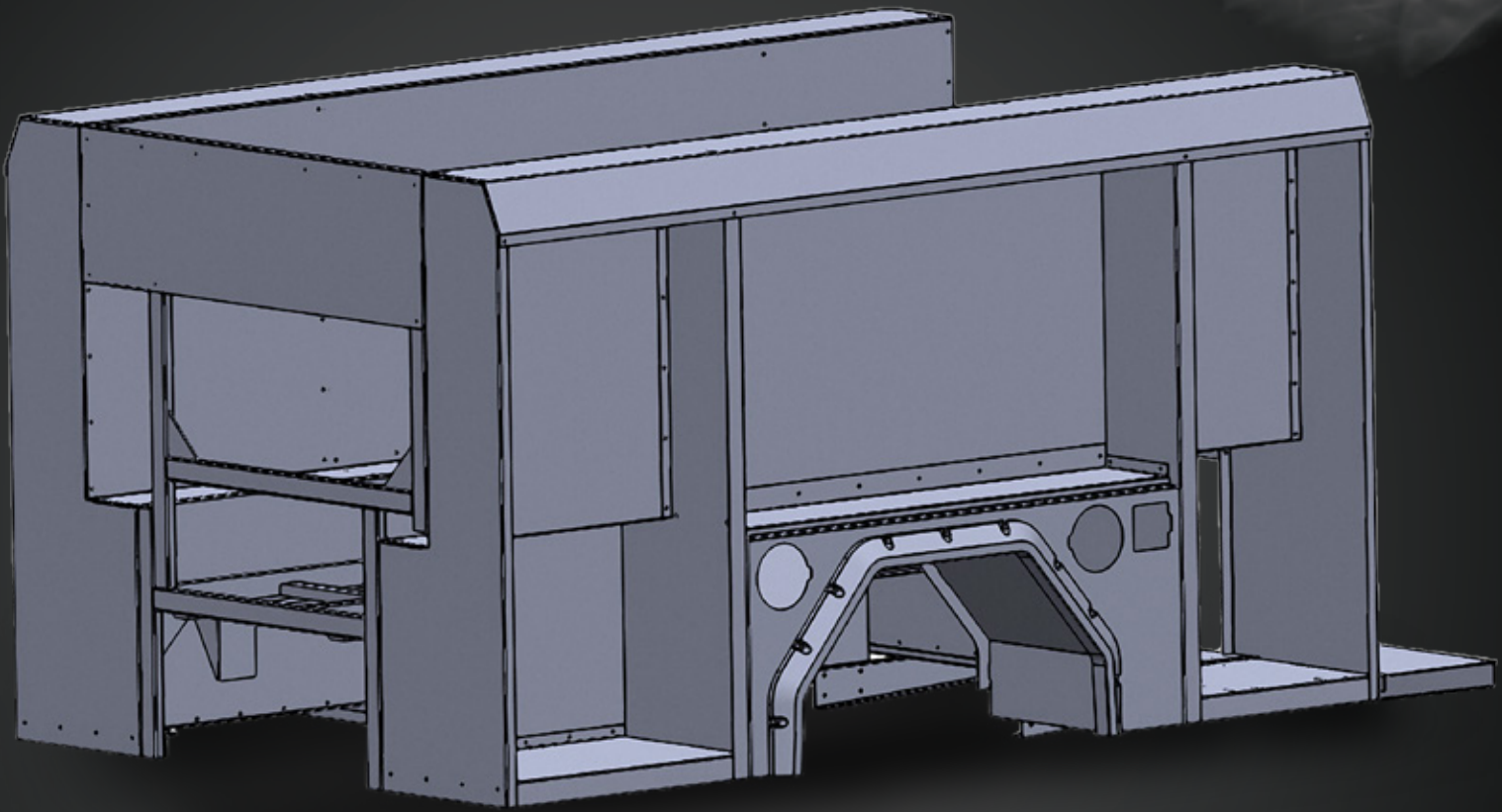


CRT BODY



CRT BODY

CORROSION RESISTANT TECHNOLOGY

WWW.ROSENBAUERAMERICA.COM

 **rosenbauer**

CRT BODY



DESIGNED FOR MAXIMUM CORROSION RESISTANCE



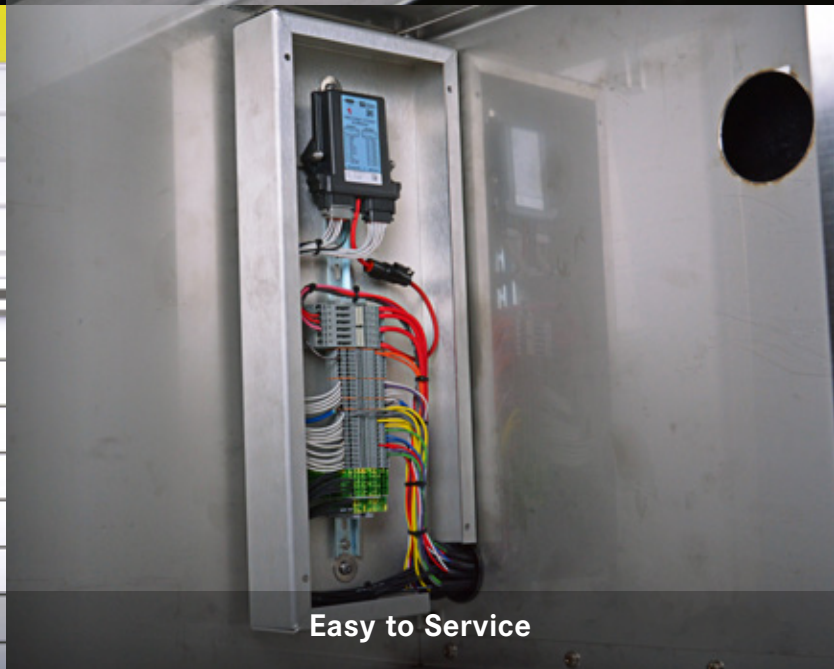
Bolted Construction



Tailboard and Rubrail Spacing



Anodized Aluminum Header



Easy to Service



Replaceable Panels



Corrosion Resistant Fenderette



Bolt-in Wheelwell Liner

STAINLESS STEEL BOLTED CONSTRUCTION BODY

The Corrosion Resistant Technology body was engineered to resolve corrosion issues in the most common locations-where metals of different types are in use. To prevent irritants such as water, oil, or fuel from becoming trapped and thus starting the electrochemical process, space is provided to allow for air to flow and fluids to run off.



Wheelwell panels can be natural finish or painted



Torsion Spring Mount



HOT-DIP GALVANIZED STEEL SUB-FRAME

Our steel sub-frame is backed by a lifetime warranty. It is hot-dip galvanized, which is a time-tested anti-corrosion coating that chemically bonds with the steel. The sub-frame absorbs torsion which results in resisting of fatigue cracks. Hot-dip galvanized frame rails are available on Rosenbauer custom chassis which offer the same benefits of anti-corrosion protection.



Poly Spacers



Warning Light in Rail



AMDOR Roll-up Doors

ROSENBAUERAMERICA.COM

INFO@ROSENBAUERAMERICA.COM

 ROSENBAUER GROUP

 @ROSYFIRE

 ROSENBAUERFIRE

Rosenbauer South Dakota, LLC

100 Third Street; Lyons, SD 57041
605.543.5591

Rosenbauer Minnesota, LLC

5181 260th Street; Wyoming, MN 55092
651.462.1000

Rosenbauer Motors, LLC

5190 260th Street; Wyoming, MN 55092
651.462.1000

Rosenbauer Aerials, LLC

870 S Broad Street; Fremont, NE 68025
402.721.7622



SOUTH DAKOTA, LLC. #011714-RSD | MINNESOTA, LLC. #011714-RMN